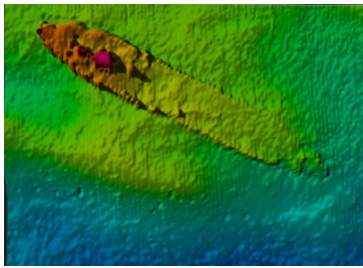


# SHIPWRECKS

**INFOMAR:** the **IN**tegrated Mapping **FO**r the Sustainable Development of Ireland's **MAR**ine Resource

## Irish Shipwrecks

As part of INFOMAR survey operations, INFOMAR has surveyed a number of shipwrecks.



**SS Premier** ★

Type of vessel: Steam Coaster  
Date of building: 1894  
Date of loss: 1898

### How did it sink?

The SS *Premier* was travelling from Hamburg to Limerick with 600 tonne cargo of sugar. The ship had a captain and a crew of 14. It collided with a steamer called 'Mermaid'. There was no loss of life. It is now locally known as the 'Sugar Boat'.

INFOMAR is the Department of Communications, Climate Action and Environment (DCCAE) funded national seabed mapping programme, jointly managed and delivered by Geological Survey Ireland and the Marine Institute.



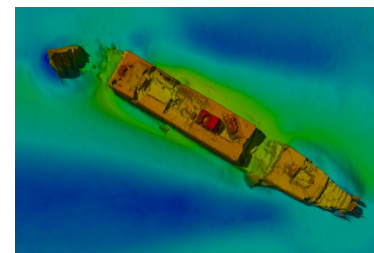
**RMS Lusitania**



Type of vessel: Passenger Liner  
Date of building: 1906  
Date of loss: 1915

### How did it sink?

The RMS *Lusitania* was travelling to Liverpool. It was the largest ship ever built at the time. The liner was detected and attacked by a U-20 German submarine. It sank in 18 minutes and 1,198 people died and 764 people survived.



★ **SS Polwell**

Type of vessel: British Steam Collier  
Date of building: 1888  
Date of loss: 1917-1918

### How did it sink?

The SS *Polwell* was travelling from Troon to France. The ship was torpedoed by a U-96 German submarine. It was struck just off the north Dublin coast. There was no loss of life, all 30 crew members safely landed at Rockabil lighthouse.

# SHIPWRECKS

## Wordsearch

A Y S K R M Q V Q K F Y  
X I D S A A O Y C L G R  
Q T N E P P M E Z Y N T  
O G T A B O R O T G I E  
B S C K T W L B F O K M  
H A C H P I V W L N N Y  
Y P M I X G S S E K I H  
S N H C Z C I U Z L S T  
H S L V H M V C L P L A  
S S P R E M I E R S P B  
R E G N E S S A P P M H  
M R M S F T Q D K S E R

PASSENGER  
SINKING  
STEAM  
INFOMAR  
SHIPWRECK  
SSPREMIER  
BATHYMETRY  
RMSLUSITANIA  
SSPOLWELL

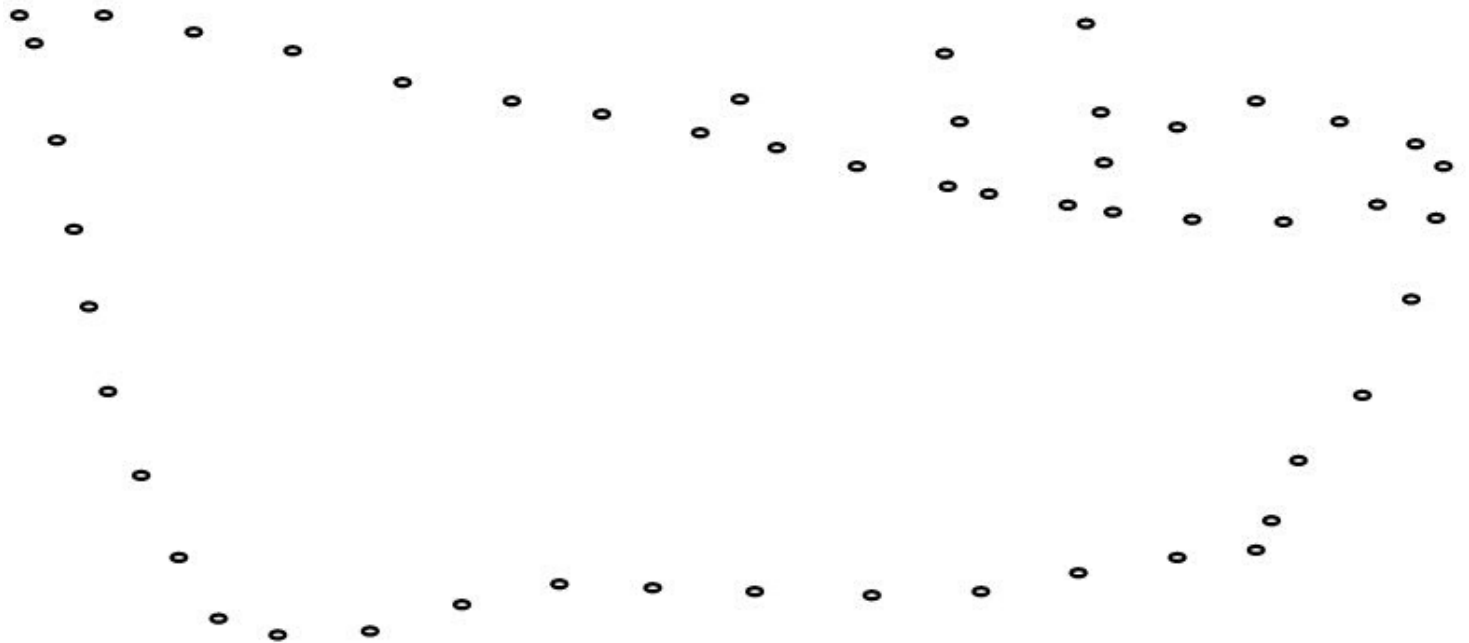
### Did you know?

INFOMAR has mapped over 400 shipwrecks.



# SHIPWRECKS

## Join the Dots



Share your work by taking a photo of your completed activity and post on Twitter or Instagram and tag **#ExploringSeaScience**

# Answers

A Y S K R M Q V Q K F Y  
X I D S A A O Y C L G R  
Q T N E P P M E Z Y N T  
O G T A B O R O T G I E  
B S C K T W L B F O K M  
H A C H P I V W L N N Y  
Y P M I X G S S E K I H  
S N H C Z C I U Z L S T  
H S L V H M V C L P L A  
S S P R E M I E R S P B  
R E G N E S S A P P M H  
M R M S F T Q D K S E R